

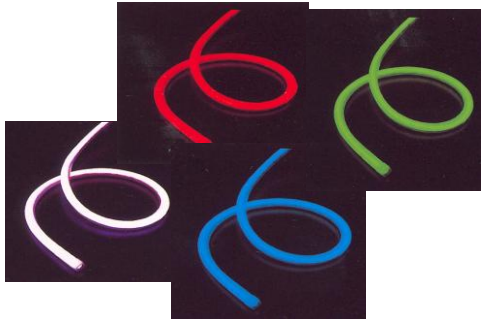
☒ Rue de Moorsledestraat 100
1020 Bruxelles Brussel
BE - Belgique - Belgïe



☎ : +32(0)2 427 43 63
☎ : +32(0)2 425 29 49
✉ : ilvris@skynet.be

WO129-07

SIGNALISATION



ULTRA BRIGHT LEDNEON FLEXIBLE - outdoor, with america chip, with 5MM DIA LED, 0,5" led spacing, size 12*26*R5MM, without accessories, (various unit length for cutting)

LN-FX-2W-24V

7,62 cm
7,62 cm
10,16 cm
10,16 cm

green
blue
yellow
red

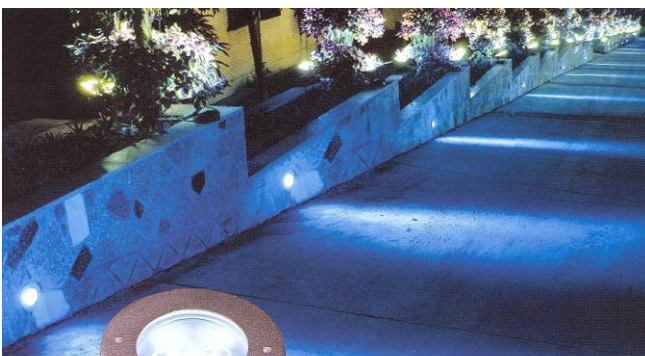
LN-FX-2W-240V

0,91 m
0,91 m
1,52 m
1,52 m



LEE-CT-DIA60-yellow

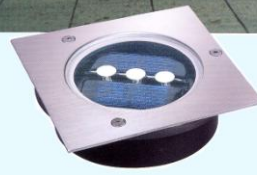
LED PATH LAMP SERIES, beveled edge disk with even glass lens, size: dia 68xH80mm, with 9pcs led, 24V/0,96W, IP67, 0,3M naked power cord: H05rn-F2*1,0mm² BL, packing: 1pc/white box, 32 pcs/outer carton, size 30,5x30,5x22cm, colours: yellow



LEE-CS-100x100-PC-3x1W-24V-W
LED PATH LAMP SERIES, light source: 3x1W led, operating voltage: 24V, colour: pure white 100x100

LEE-SC-DIA220-240V-W-CE

240V, 180pcs, 5 ultra bright led, beam angle: 30°, IP65, 12W, power switch (GPE 12150) 100V-240V/12VDC 1,5A, with 70cm H05RN-F3*1,0mm² BL rubber cable



WR-008-LD-00

LED SOLAR PATH LAMP, 1,2V, 1rechargeable nimh battery (nimh AA1500MAH 1,2V), size: 120*120*36mm, white led, 2LM, 450G/PC, 48m/W, LEDs: 9pcs, IP65